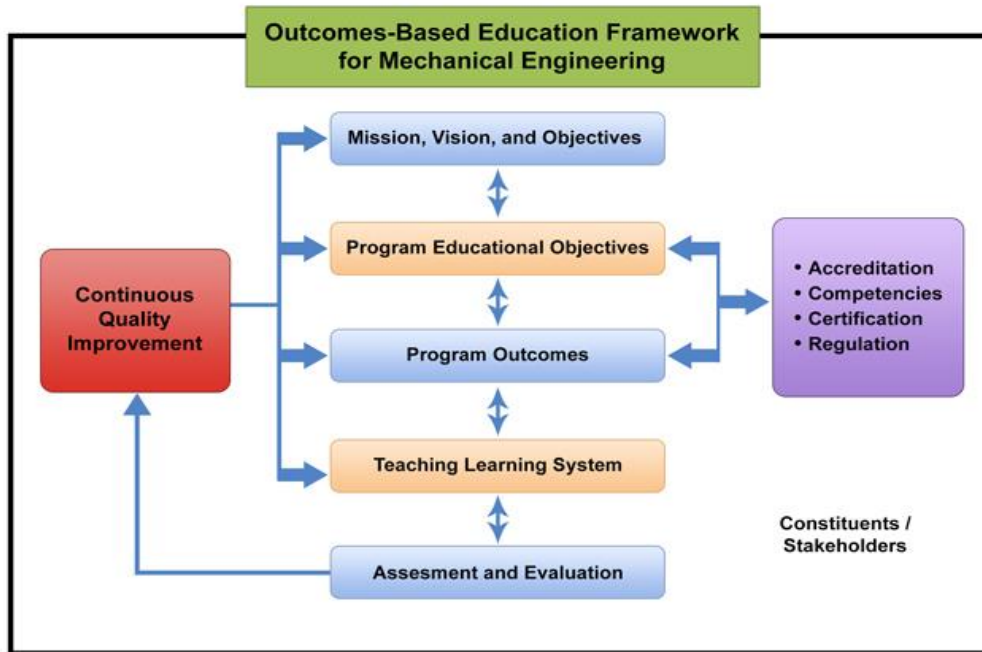


Out Come Based Curriculum and Teaching – Learning Processes

The Department of Mechanical Engineering, PESITM adopted OBE from the A.Y. 2015-16. The Framework of OBE followed is as shown below.

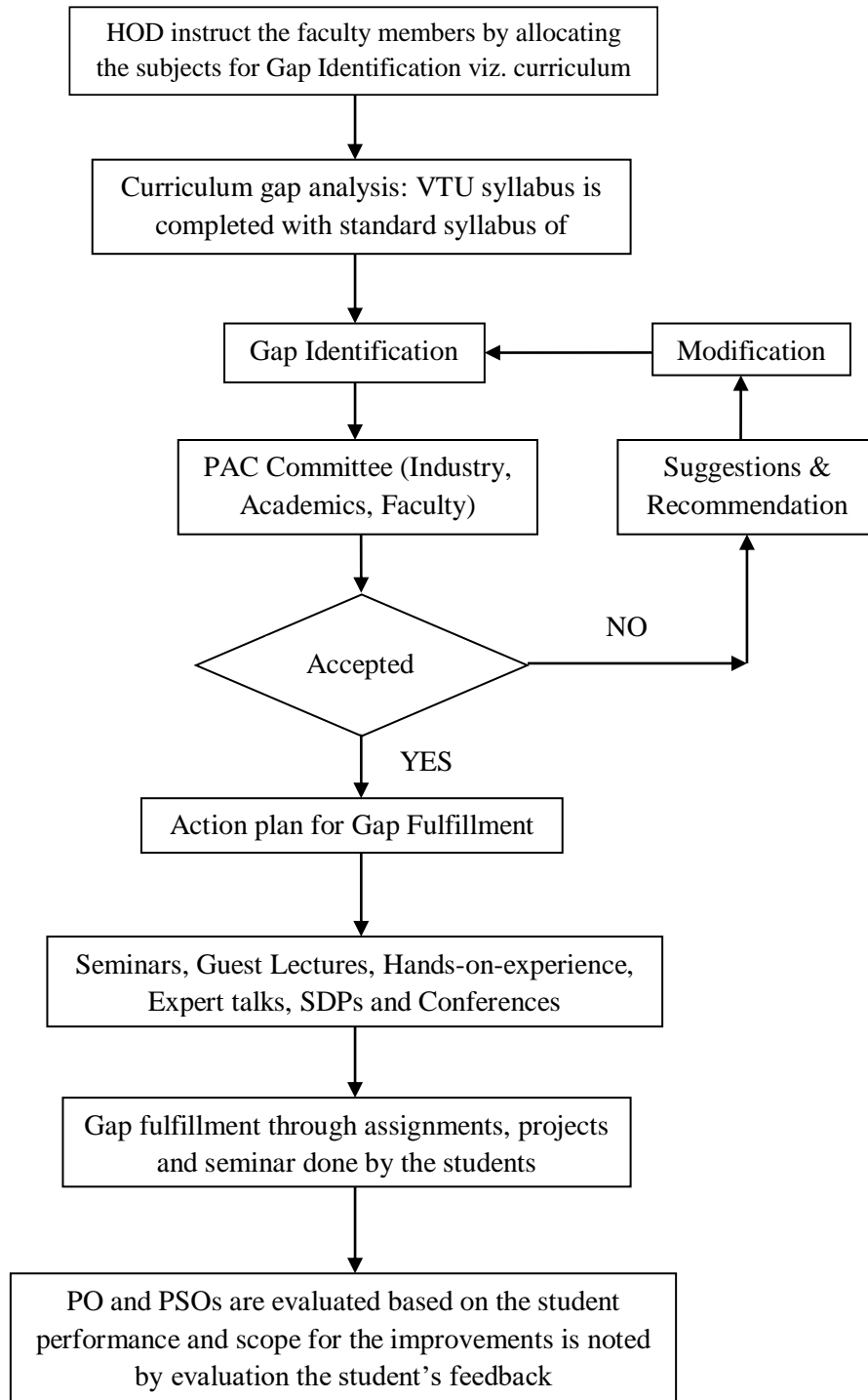


An OBE (Outcome-Based Education) process in the context of mechanical engineering refers to a systematic approach to designing, delivering, and assessing educational programs with a primary focus on desired learning outcomes. OBE shifts the emphasis from what is taught to what students are expected to learn and be able to do at the end of their educational experience.

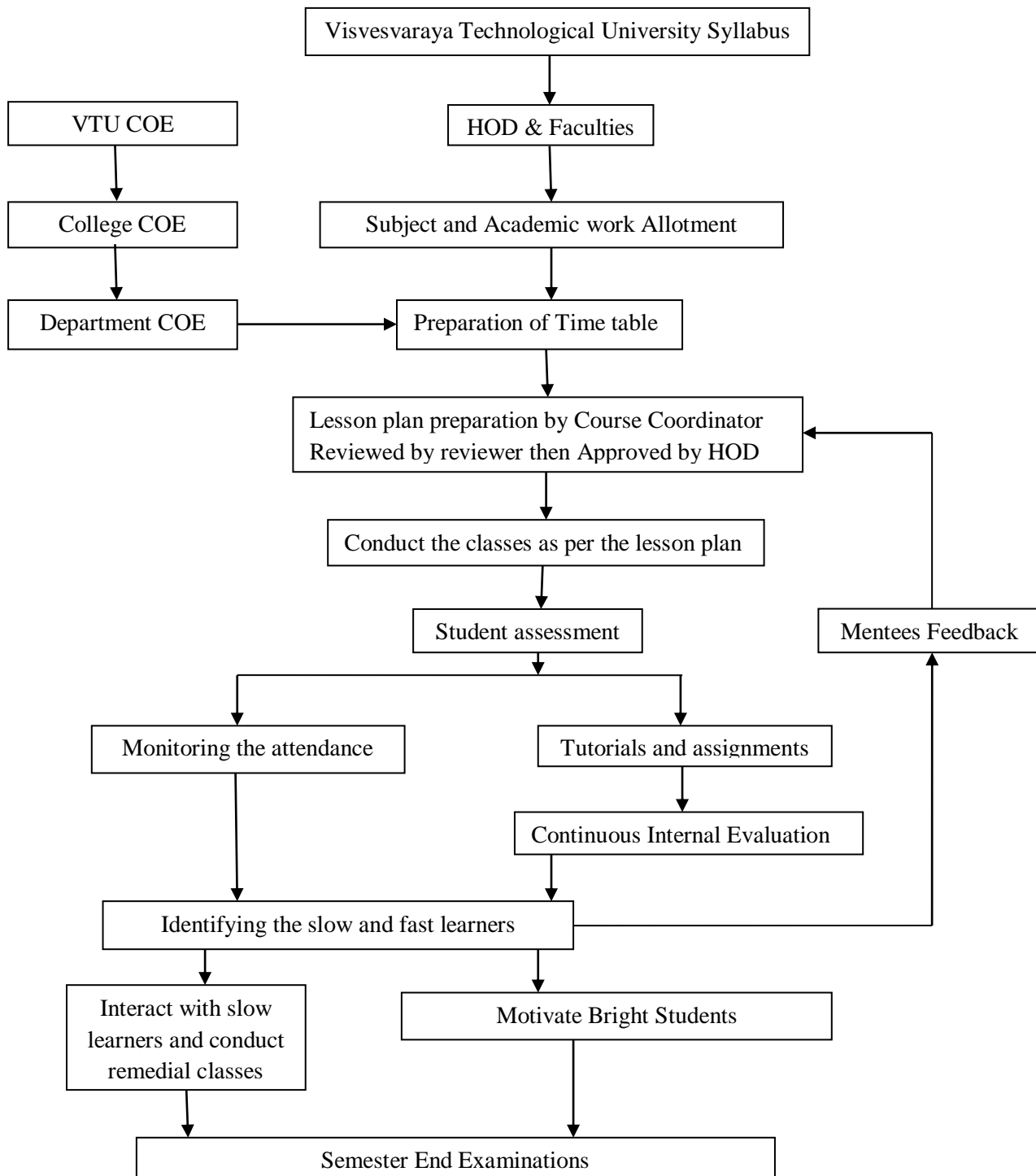
Course Outcomes

- Each course is assigned to the faculty based on their competency matrix of the department.
- Course instructor in consultation with course coordinator prepares the course outcomes.
- CO's are mapped with PO's and PSO's with justification.
- Lesson plan is prepared by the course instructor shared to the students.

Process for Identifying Curriculum Gap



Teaching Learning Process



Question Paper Review Committee

